



DURAFUSE FRAMES, LLC
5801 West Wells Park Road
West Jordan, UT 84081
801-727-4060
www.durafuseframes.com

DuraFuse Frames Technology

CSI Section:

05 12 00 Structural Steel Framing

1.0 RECOGNITION

The DuraFuse Frames Technology recognized in this report has been evaluated for use as beam-to-column connections with Special Moment Frames (SMF) and Intermediate Moment Frames (IMF). The structural performance of the DuraFuse Frames Technology complies with the intent of the provisions of the following codes and regulations:

- 2018, 2015, and 2012 International Building Code® (IBC)
- 2019 California Building Code (CBC) – Attached Supplement
- 2020 Los Angeles Building Code (LABC) – Attached Supplement

2.0 LIMITATIONS

Use of DuraFuse Frames Technology recognized in this report is subject to the following limitations:

2.1 All connections and details of DuraFuse Frames shall be designed by a registered design professional working on behalf of DuraFuse Frames and the design documents shall be submitted to a project registered design professional (engineer of record) for acceptance and to the building official for approval as described in Section 3.2.10 of this report.

2.2 Structural design drawings and specifications, shop drawings, and erection drawings shall comply with Section 1603 of the 2018, 2015, and 2012 IBC, Section A4 and I1 of AISC 341-10 or AISC 341-16 and Section A4 of AISC 360-10 or AISC 360-16.

2.3 Fabrication of the DuraFuse Frame assemblies shall comply with Section 3.3 of this report and with approved construction drawings specified by DuraFuse Frames, LLC. as “DF General Notes”, and shall be performed on the premises of a fabricator registered and approved by the building official in accordance with Section 1704.2.5.1 of the 2018 IBC (1704.2.5.1 of the 2015 IBC; 1704.2.5.2 of the 2012 IBC) or as specified in Section 3.1 of this report.

2.4 Erection shall comply with Section 3.4 of this report and the approved construction drawings prepared by a registered design professional and specified by DuraFuse Frames, LLC as “DF General Notes”.

2.5 Quality control and quality assurance shall comply with Section 3.5 of this report and approved construction drawings specified by DuraFuse Frames, LLC as “DF General Notes”.

3.0 PRODUCT USE

3.1 General: DuraFuse Frames Technology complies with Chapter 22 of the 2018, 2015, and 2012 IBC and Sections E2, E3, and K2 of AISC 341-10 and AISC 341-16. The DuraFuse Frames connection is prequalified for use in Special Moment Frame (SMF) and Intermediate Moment Frame (IMF) systems within the limits stated in Sections 3.2.2 through 3.2.8 of this report.

With DuraFuse Frames Technology, the beam is connected to the column via plates and bars. The column has cover plates on each side that are fillet welded to the column flanges (Figure 1 of this report). Four bars that extend past the face of the column are fillet welded to the column cover plates. The column has a shear tab, with horizontal slotted holes, that is fillet welded to the column face. The beam web, with standard holes, is attached to the shear tab with tensioned bolts. The beam flanges are attached to the bars via top plates and a fuse plate (Figure 1 of this report). The beam flanges and bars have standard holes, while the top and bottom plates have oversized holes. The bottom plate functions as a structural fuse, and is proportioned such that certain regions of the plate experience shear yielding when the connection is subjected to severe earthquake loading. The bottom plate is bolted in place, so that it could be removed and replaced following a severe earthquake. The top plates are intended to experience minimal yielding, such that they would not require repair following a severe earthquake. The various plates and bars in the connection are proportioned such that yielding does not occur in the column or beam.

3.2 Design:

3.2.1 General: The design of the structural steel seismic force-resisting systems shall comply with Chapter 22 of the 2018, 2015, or 2012 IBC. The SMF or IMF shall be designed and detailed in accordance with the specific requirements for the systems as set forth in IBC Section 2205.2 and Table 12.2-1 of ASCE/SEI 7-10 or ASCE/SEI 7-16. The design of structural welds in the DuraFuse Frames shall comply with AWS D1.1 and AWS D1.8.

The product described in this Uniform Evaluation Service (UES) Report has been evaluated as an alternative material, design or method of construction in order to satisfy and comply with the intent of the provision of the code, as noted in this report, and for at least equivalence to that prescribed in the code in quality, strength, effectiveness, fire resistance, durability and safety, as applicable, in accordance with IBC Section 104.11. This document shall only be reproduced in its entirety.





3.2.2 Connection Properties: The structural model used for evaluating frame stiffness shall: use the combined thickness of the cover plates and beam web for determining panel zone stiffness; assume no column flexural deformations within the panel zone; assume no flexural or shear deformation of the beam within the panel zone; assume that the beam-to-column connection is fully rigid.

3.2.3 Plastic Hinge Location: For design purposes, the plastic hinge may be considered to form at the face of the column.

3.2.4 Required Shear Strength: The required shear strength for the beam and the shear-tab-to-column connection, V_h , shall be calculated using equation Eq-1:

$$V_h = 2M_p/L_h + V_{gravity} \quad (\text{Eq-1})$$

where

M_p = the nominal plastic moment of the beam, kip-in (N-mm)

L_h = clear-span beam length, in. (mm)

$V_{gravity}$ = beam shear force resulting from $1.2D + f_l L + 0.2S$ (where f_l is the load factor determined by the applicable building code given in Section 1.0 of this report for live loads, but not less than 0.5), kips (N).

3.2.5 Beam Limitations: Beams in the moment frame shall satisfy the following limitations:

- (1) Beams shall be rolled wide flange or built-up I-shaped beams conforming to the requirements of Section 4.2.1 of this report.
- (2) Rolled and built-up wide-flange beam depth shall be limited to W40 (W1000) maximum.
- (3) Rolled and built-up wide-flange beam weight shall be limited to 309 lb/ft (460 kg/m) maximum.
- (4) The width-to-thickness ratios for beam flanges and webs shall conform to the limits for compact sections in B4 of AISC 360-10 or AISC 360-16.
- (5) Beam lateral bracing per Section D1.2, E3.4b, and E2.4a of AISC 341-10 or AISC 341-16 is not required.

3.2.6 Column Limitations: Columns in the moment frame shall satisfy the following limitations:

- (1) Column shall be rolled wide flange shapes, built-up I-shapes, or box shapes (built-up or HSS) conforming to the requirements of Section 4.2.1 of this report.
- (2) Rolled and built-up wide-flange column depths shall be limited to W36 (W920) maximum.
- (3) There is no limit on column weight per foot.
- (4) Width-to-thickness ratios for the flanges and webs of columns shall conform to the requirements of

Sections D1.1, E2.5a (for IMF systems) or E3.5a (for SMF systems) of AISC 341-10 for the 2015 and 2012 IBC or AISC 341-16 for the 2018 IBC.

3.2.7 Protected zone: The protected zone of the connection shall consist of the bottom fuse plate (Figure 1 of this report).

3.2.8 Column-Beam Relationship Limitations: Column-to-beam connections shall satisfy the following limitations:

- (1) The beam flange width shall satisfy equation Eq-2 for geometric compatibility:

$$b_{bf} + 0.25 \text{ in.} \leq b_{cf} + 2t_{cp} \quad (\text{Eq-2})$$

where:

b_{bf} = width of the beam flange

b_{cf} = width of the column flange

t_{cp} = thickness of the cover plates

- (2) Panel zones shall conform to the applicable requirements of AISC 341-10 for the 2015 or 2012 IBC, or to AISC 341-16 for the 2018 IBC.
- (3) For SMF systems, column-beam moment ratios shall conform to Eq-3:

$$\Sigma M_{pc}^* / \Sigma M_{pc} \geq 1.0 \quad (\text{Eq-3})$$

Where:

ΣM_{pc}^* = the sum of the projections of the nominal flexural strengths (M_{pc}) of the column above and below the connection joint, at the location of theoretical hinge formation in the column (one quarter of the column depth above and below the edges of the cover plates), to the beam centerline with a reduction for axial force in the column, and shall satisfy Eq-4:

$$\Sigma M_{pc}^* = \Sigma Z_c (H/H_p) (F_{yc} - P_{uc}/A_g) \quad (\text{Eq-4})$$

Z_c = plastic section modulus of the column, in.³ (mm³)

H = half of the story height, in. (mm)

H_p = distance from the column mid-height to the theoretical hinge location (one quarter of the column depth above or below the edges of the cover plates), in. (mm)

F_{yc} = minimum specified yield strength of the column, ksi (MPa)

P_{uc} = required compressive column strength using LRFD load combinations, including amplified seismic load, kips (N)

A_g = gross area of column, in.² (mm²)



$$\Sigma M_{pb}^* = \Sigma (Z_b F_{yb})(1 + d_c/L_h) \quad (\text{Eq-5})$$

Z_b = plastic section modulus of the beam, in.³ (mm³)

F_{yb} = minimum specified yield strength of the beam, ksi (MPa)

d_c = depth of the column, in. (mm)

L_h = clear-span beam length, in (mm)

3.2.9 Surrounding Elements: Design of supporting and supported elements and connections to DuraFuse Frames shall comply with the provisions of the IBC, including Chapter 19 for concrete, Chapter 21 for masonry, and Chapter 22 for steel. Provisions for non-participating supported components in Section 12.12 of ASCE/SEI 7 shall apply. Column bases to concrete and masonry shall be designed and detailed to preclude brittle failure.

3.2.10 Design Responsibility: After completing preliminary selection of beam and column sizes using DuraFuse Frame Technology, satisfying the provisions 3.2.4 to 3.2.8 of this report, the registered design professional (engineer of record) submits a computer model to DuraFuse Frames, LLC. Upon completion of the computer model review and after any additional required information has been supplied by the engineer of record, DuraFuse Frames engineers provide project-specific connection designs, including structural notes and details for connections. The engineer of record reviews calculations and drawings prepared by DuraFuse Frames to ensure that all connections have been adequately designed and detailed.

3.3 Fabrication: DuraFuse Frames shall be manufactured by an approved fabricator in accordance with Section 1704.2.5.1 of the 2018 or 2015 IBC, or 1704.2.5.2 of the 2012 IBC. All welders, tack welders, and welding operators shall be qualified in conformance with AWS D1.1, Clause 4, Part C. Welders and welding operators performing welds as described in AWS D1.8 Clause 5.1.1 shall be subjected to Supplemental Welder Qualification Testing in accordance with AWS D1.8 Chapter 5.

Welding shall be performed in accordance with a Welding Procedure Specification (WPS) in accordance with AWS D1.1 which shall be prepared for every different welding application including welding position, welding process, electrode manufacturer, filler metal trade name for the electrode type selected, and other essential variables as defined in AWS D1.1. In addition, for demand critical welds, supplemental requirements in Clause 6.1 of AWS D1.8 apply.

3.4 Erection: Erection of DuraFuse Frames shall be in accordance with Chapter M of AISC 360, AISC 303, Chapter I of AISC 341, and Chapter 22 of the IBC.

Shims with a maximum overall thickness of ¼ inch (6.4 mm) may be used between the top plates and bars or beams and between the fuse plate and bars or beams. Shims, if required, may be finger shims or may be produced with drilled or punched holes.

3.5 Quality Control and Quality Assurance: A quality assurance plan conforming to Section 1704.2.5.1 and 1705.2 of the 2018 IBC (1704.2.5.1 and 1705.2 of the 2015 IBC; 1704.2.5.1 and 1705.2 of the 2015 IBC) shall be included in the structural design by the registered design professional and approved by the code official.

Special inspections and tests, and structural observations shall comply with the applicable requirements in Chapter 17 of the IBC, Chapter N of AISC 360, Chapter J of AISC 341, provisions within AISC 303, and Clause 7 of AWS D1.8.

4.0 PRODUCT DESCRIPTION

4.1 General: DuraFuse Frames Technology complies with Sections E2, E3 and K1 of AISC 341-10 for the 2015 and 2012 IBC, and complies with Sections E2, E3 and K1 of AISC 341-16 for the 2018 IBC. DuraFuse Frames Technology is permitted for use in special moment frame (SMF) and intermediate moment frame (IMF) beam-to-column connections.

4.2 Materials:

4.2.1 Structural Shapes: Rolled wide-flange beam and column sections shall conform to ASTM A992. Plates for built-up wide-flange or built-up box shapes shall conform to Section 4.2.2 of this report. HSS column shapes shall conform to ASTM A1085.

4.2.2 Plates: All connection steel plates, which consist of cover plates, bars, shear tabs, top plates, and fuse plates shall be fabricated from structural steel complying with ASTM A572/A572M Grade 50 steel. Fuse plates shall be fabricated from plates with mill certified tensile strength less than or equal to 85 ksi (586 MPa), unless independent material testing determines that the tensile strength is less than or equal to 85 ksi (586 MPa). Plates that are thicker than 2 in. (50 mm) shall have a minimum Charpy V-notch toughness of 20 ft-lb (27 J) at 70°F (21°C) in accordance with Section A3.3 of AISC 341-16 for the 2018 IBC, and Section A3.3 of AISC 341-10 for the 2015 and 2012 IBC.

4.2.3 Welds: All welding shall be performed using E70 electrodes. The weld filler metal and associated welding process for all fillet welds shall meet the requirements of any of the following:

- E70T-6, E71T-8, or E70TG-K2 for flux cored arc welding (FCAW)
- E7XT-9 for flux core arc welding (FCAW) with



gas shielding

- F7A2-EXXX for submerged arc welding (SAW)
- E7018 stick electrode for shielded metal arc welding (SMAW)
- ER70S-X, E70C-XM or E70C-XC for gas metal arc welding, except short circuit transfer.

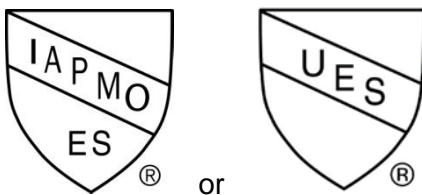
All weld filler material shall satisfy the requirements specified in Clause 6.3 of the Structural Welding Code-Seismic Supplement (AWS D1.8/D1.8M) including the minimum Charpy V-notch (CV) toughness 20 ft-lb (27 J) at a temperature lower than 0°F (-18°C) as indicated in Section A3.4 of AISC 341-16 for the 2018 IBC, or Section A3.4 of AISC 341-10 for the 2015 IBC and 2012 IBC.

4.2.4 Bolts: Bolts shall be pretensioned high-strength bolts conforming to ASTM F3125 Grade A490 or A490M, or Grade A325 or A325M, or Grade F2280 or F2280M, or Grade F1852 or F1852M. Bolt diameter is limited to a maximum of 1¼ inches (32 mm).

5.0 IDENTIFICATION

A notice of intellectual property shall be affixed on each sheet of shop detail and field erection drawings containing DuraFuse Frames. Such notice shall be provided by DuraFuse Frames, LLC. in a format suitable to the needs of the fabricator’s detailer.

The DuraFuse Frames Technology described in Section 4.0 of this report is identified by a DuraFuse label. The identification includes the IAPMO Uniform Evaluation Service Mark of Conformity and the evaluation report number (ER-610). Either Mark of Conformity may be used as shown below:



IAPMO UES ER-610

6.0 SUBSTANTIATING DATA

6.1 Data in accordance with the ICC-ES Acceptance Criteria for Steel Moment Frame Connection Systems (AC129), approved May 2018. Test results are from laboratories in compliance with ISO/IEC 17025.

7.0 STATEMENT OF RECOGNITION

This evaluation report describes the results of research carried out by IAPMO Uniform Evaluation Service on DuraFuse Frames Technology to assess conformance to the codes shown in Section 1.0 of this report and serves as documentation of the product certification.

Brian Gerber, P.E., S.E.
Vice President, Technical Operations
Uniform Evaluation Service

Richard Beck, PE, CBO, MCP
Vice President, Uniform Evaluation Service

GP Russ Chaney
CEO, The IAPMO Group

For additional information about this evaluation report please visit www.uniform-es.org or email us at info@uniform-es.org

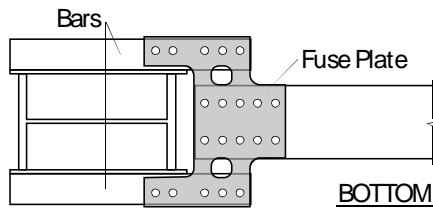
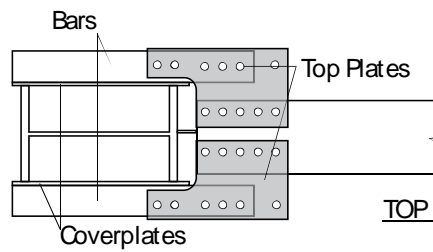
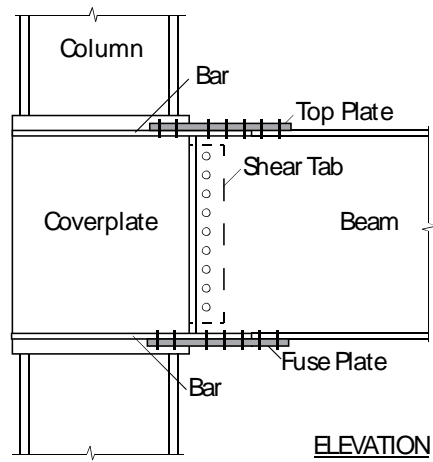


FIGURE 1 – DURAFUSE FRAMES CONNECTION



CALIFORNIA SUPPLEMENT

DURAFUSE FRAMES, LLC
5801 West Wells Park Road
West Jordan, UT 84081
801-727-4060
www.durafuseframes.com

DuraFuse Frames Technology

CSI Section:

05 12 00 Structural Steel Framing

1.0 RECOGNITION

The DuraFuse Frames Technology described in ER-610 and this supplemental report has been evaluated for use as has been evaluated for use as beam-to-column connections with Special Moment Frames (SMF) and Intermediate Moment Frames (IMF) beam-to-column connections. The structural performance of the DuraFuse Frames Technology complies with the intent of the provisions of the following codes and regulations:

- 2019 California Building Code (CBC)

2.0 LIMITATIONS

Use of the DuraFuse Frames Technology recognized in this supplement is subject to the following limitations:

2.1 All requirements in ER-610 shall apply except as specifically noted in this supplement.

2.2 All connections and details of DuraFuse Frames shall be designed by a design professional registered by the state of California working on behalf of DuraFuse Frames and the design documents shall be submitted to a project registered design professional (engineer of record) for acceptance and to the building official for approval as described in Section 3.2.10 of ER-610.

2.3 Structural design drawings and specifications, shop drawings, and erection drawings shall comply with Sections 1603 and as applicable, 1603A of the CBC, Sections A4 and I1 of AISC 341 and Section A4 of AISC 360.

2.4 Fabrication of the DuraFuse Frame assemblies shall comply with Section 3.3 of this report and with approved construction drawings specified by DuraFuse Frames, LLC, as "DF General Notes", and shall be performed on the premises of a fabricator registered and approved by the building official in accordance with Section 1704.2.5.1 of the CBC or as specified in Section 3.1 of this report.

2.5 Erection shall comply with Section 3.4 of this report and the approved construction drawings prepared by a registered

design professional and specified by DuraFuse Frames, LLC, as "DF General Notes".

2.6 Quality control and quality assurance shall comply with Section 3.5 of this report and approved construction drawings specified by DuraFuse Frames, LLC as "DF General Notes".

3.0 PRODUCT USE

3.1 DuraFuse Frames Technology complies with Chapters 22 and as applicable, 22A of the CBC and Sections E2, E3, and K2 of AISC 341. The DuraFuse Frames connection is prequalified for use in Special Moment Frame (SMF) and Intermediate Moment Frame (IMF) systems within the limits stated in Sections 3.1 and of ER-610 and Section 3.2 of this report.

3.2 Design:

3.2.1 General: The design of the structural steel seismic force-resisting systems shall comply with Chapters 22 and as applicable, 22A of the CBC, and Section 3.2 of ER-610, except as modified in this section. The SMF or IMF shall be designed and detailed in accordance with the specific requirements for the systems as set forth in CBC Section 2205.2 and Table 12.2-1 of ASCE/SEI 7. The design of structural welds in the DuraFuse Frames shall comply with AWS D1.1 and AWS D1.8.

3.2.2 Beam Limitations: Beams shall satisfy the requirements in Section 3.2.6 of ER-610. In addition, in accordance with CBC Section 2205A.4 for use under OSHPD, Sections 3.2.5 (2) and 3.2.5 (3) of ER-610 shall be replaced with the following:

- (2) Rolled and built-up wide-flange beam depth shall be limited to 38.6 inches (980 mm) maximum.
- (3) Rolled and built-up wide-flange beam weight shall be limited to 232 lb/ft (345 kg/m) maximum.

3.2.3 Column Limitations: Columns shall satisfy the requirements in Section 3.2.6 of ER-610. In addition, Section 3.2.6 (4) of ER-610 shall be replaced with the following:

- (4) Width-to-thickness ratios for the flanges and webs of columns shall conform to the requirements of Sections D1.1, E2.5a (for IMF systems) or E3.5a (for SMF systems) of AISC 341.

3.2.4 Column-Beam Relationship Limitations: Column-to-beam connections shall satisfy the requirements in Section 3.2.8 of ER-610. In addition, Section 3.2.8 (2) of ER-610 shall be replaced with the following:

- (2) Panel zones shall conform to the applicable requirements of AISC 341-16.



3.2.5 Surrounding Elements: Section 3.2.9 of ER-610 shall be replaced with the following:

Design of supporting and supported elements and connections to DuraFuse Frames shall comply with the provisions of the CBC, including Chapters 19 and as applicable 19A for concrete, Chapters 21 and as applicable 21A for masonry, and Chapters 22 and as applicable 22A for steel. Provisions for non-participating supported components in Section 12.12 of ASCE/SEI 7 shall apply. As, applicable, column bases to concrete and masonry shall be designed and detailed to preclude brittle failure and as applicable designed to eliminate effects of oversized holes in accordance with CBC Sections 2212.1.1 or 2204A.4.

3.3 Fabrication: DuraFuse Frames shall be manufactured by an approved fabricator in accordance with Section 1704.2.5.1 of the CBC, All welders, tack welders, and welding operators shall be qualified in conformance with AWS D1.1, Clause 4, Part C. Welders and welding operators performing welds as described in AWS D1.8 Clause 5.1.1 shall be subjected to Supplemental Welder Qualification Testing in accordance with AWS D1.8 Chapter 5.

Welding shall be performed in accordance with a Welding Procedure Specification (WPS) in accordance with AWS D1.1 which shall be prepared for every different welding application including welding position, welding process, electrode manufacturer, filler metal trade name for the electrode type selected, and other essential variables as defined in AWS D1.1. In addition, for demand critical welds, supplemental requirements in Clause 6.1 of AWS D1.8 apply.

3.4 Erection: Erection of DuraFuse Frames shall be in accordance with Chapter M of AISC 360, AISC 303, Chapter I of AISC 341, and Chapters 22 and as applicable 22A of the CBC.

Shims with a maximum overall thickness of 1/4 inch (6.4 mm) may be used between the top plates and bars or beams and between the fuse plate and bars or beams. Shims, if required, may be finger shims or may be made with drilled or punched holes.

3.5 Quality Control and Quality Assurance: A quality assurance plan conforming to Sections 1704.2.5.1, 1705.2, and as applicable, 1705A.2 of the CBC shall be included in the structural design by the registered design professional and approved by the code official.

Special inspections and tests, and structural observations shall comply with the applicable requirements in Chapters 17 and as applicable 17A of the CBC, Chapter N of AISC 360, Chapter J of AISC 341, provisions within AISC 303, and Clause 7 of AWS D1.8.

4.0 PRODUCT DESCRIPTION

4.1 General: DuraFuse Frames Technology complies with Sections E2, E3 and K1 of AISC 341-16. DuraFuse Frames Technology is permitted for use in special moment frame (SMF) and intermediate moment frame (IMF) beam-to-column connections.

4.2 Materials: Materials shall comply with Section 4.2 of ER-610 except as specifically noted in this section.

4.2.1 Plates: Section 4.2.1 of ER-610 shall be replaced with the following:

All connection steel plates, which consist of cover plates, bars, shear tabs, top plates, and fuse plates shall be fabricated from structural steel complying with ASTM A572/A572M Grade 50 steel. Fuse plates shall be fabricated from plates with mill certified tensile strength less than 85 ksi (586 MPa), unless independent material testing determines that the tensile strength is less than 85 ksi (586 MPa). Plates that are thicker than 2 in. (50 mm) shall have a minimum Charpy V-notch toughness of 20 ft-lb (27 J) at 70°F (21°C) in accordance with Section A3.3 of AISC 341.

4.2.2 Welds: Section 4.2.3 of ER-610 shall be replaced with the following:

All welding shall be performed using E70 electrodes. The weld filler metal and associated welding process for all fillet welds shall meet the requirements of any of the following:

- E70T-6, E71T-8, or E70TG-K2 for flux cored arc welding (FCAW)
- E7XT-9 for flux core arc welding (FCAW) with gas shielding
- F7A2-EXXX for submerged arc welding (SAW)
- E7018 stick electrode for shielded metal arc welding (SMAW)
- ER70S-X, E70C-XM or E70C-XC for gas metal arc welding, except short circuit transfer.

All weld filler material shall satisfy the requirements specified in Clause 6.3 of the Structural Welding Code-Seismic Supplement (AWS D1.8/D1.8M) including the minimum Charpy V-notch (CV) toughness 20 ft-lb (27 J) at a temperature lower than 0°F (-18°C) as indicated in Section A3.4 of AISC 341.

For additional information about this evaluation report please visit www.uniform-es.org or email at info@uniform-es.org



LOS ANGELES SUPPLEMENT

DURAFUSE FRAMES, LLC
5801 West Wells Park Road
West Jordan, UT 84081
801-727-4060
www.durafuseframes.com

DuraFuse Frames Technology

CSI Sections:

05 12 00 Structural Steel Framing

2.4 Fabrication of DuraFuse Frames Technology shall be performed in the shop of a fabricator licensed by the City of Los Angeles Building Department.

For additional information about this evaluation report please visit www.uniform-es.org or email us at info@uniform-es.org

1.0 RECOGNITION

DuraFuse Frames Technology described in ER-0610, the California Supplement to ER-610, and this supplemental report has been evaluated for use as beam-to-column connections with Special Moment Frames (SMF) and Intermediate Moment Frames (IMF). DuraFuse Frames Technology has been evaluated for structural performance properties, subject to the requirements in ER-610, the California Supplement to ER-610, and this supplemental report. DuraFuse Frames Technology were evaluated for compliance with the following codes and regulations:

- 2020 City of Los Angeles Building Code (LABC)

2.0 LIMITATIONS

Use of the DuraFuse Frames Technology recognized in this supplement are subject to the following limitations:

2.1 All requirements in ER-610 and the California Supplement to ER-610 shall apply except as specifically noted in this supplement.

2.2 All connections and details of DuraFuse Frames shall be designed by a design professional registered by the state of California working on behalf of DuraFuse Frames and the design documents shall be submitted to a project registered design professional (engineer of record) for acceptance and to the City of Los Angeles for approval as described in Section 3.2.10 of ER-610.

2.3 Continuous inspection shall be provided by the Registered Deputy Inspector in accordance with Sections 1704 and 1705 of the 2020 City of Los Angeles Building Code during installation of the DuraFuse Frames Technology.